

DEPARTMENT OF FIRE/RESCUE

The Rio Rancho Department of Fire/Rescue provides fire, emergency medical and other life safety services to those who reside, work and travel through the City of Rio Rancho. The Department of Fire/Rescue continually works to meet the ever-increasing challenges in improving the quality and types of service that we provide to our fast-growing community.

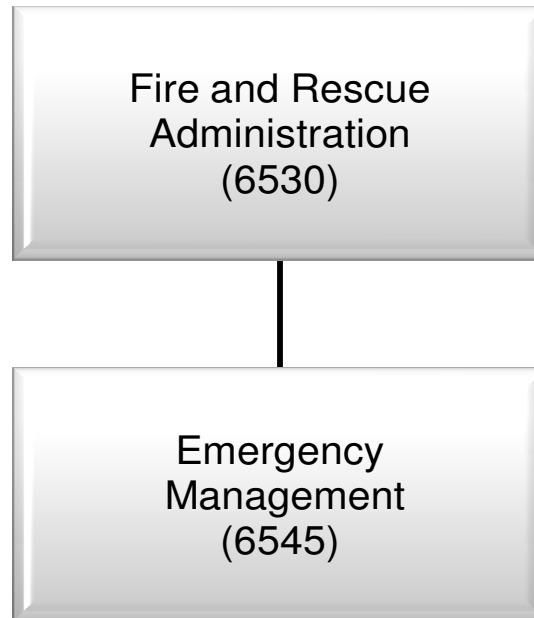
The Department operates out of five stations with 98 authorized fire/rescue personnel who provide fire prevention/suppression and emergency medical care to all of our residents and guests. We have improved the Public Protection Classification to 3 from ISO (Insurance Service Organization) that translates into hazard insurance savings for both residential and commercial properties.

The Department of Fire/Rescue provides a vast array of services, not only to the citizens of Rio Rancho, but also to the commercial and industrial occupancies doing business here. The employees of these enterprises together with their customers and the other guests of our City are also recipients of fire services that include fire prevention, fire control and suppression, rescue, Emergency Medical Services, public education, and emergency management. Specifically, the Department is responsible for the following activities:

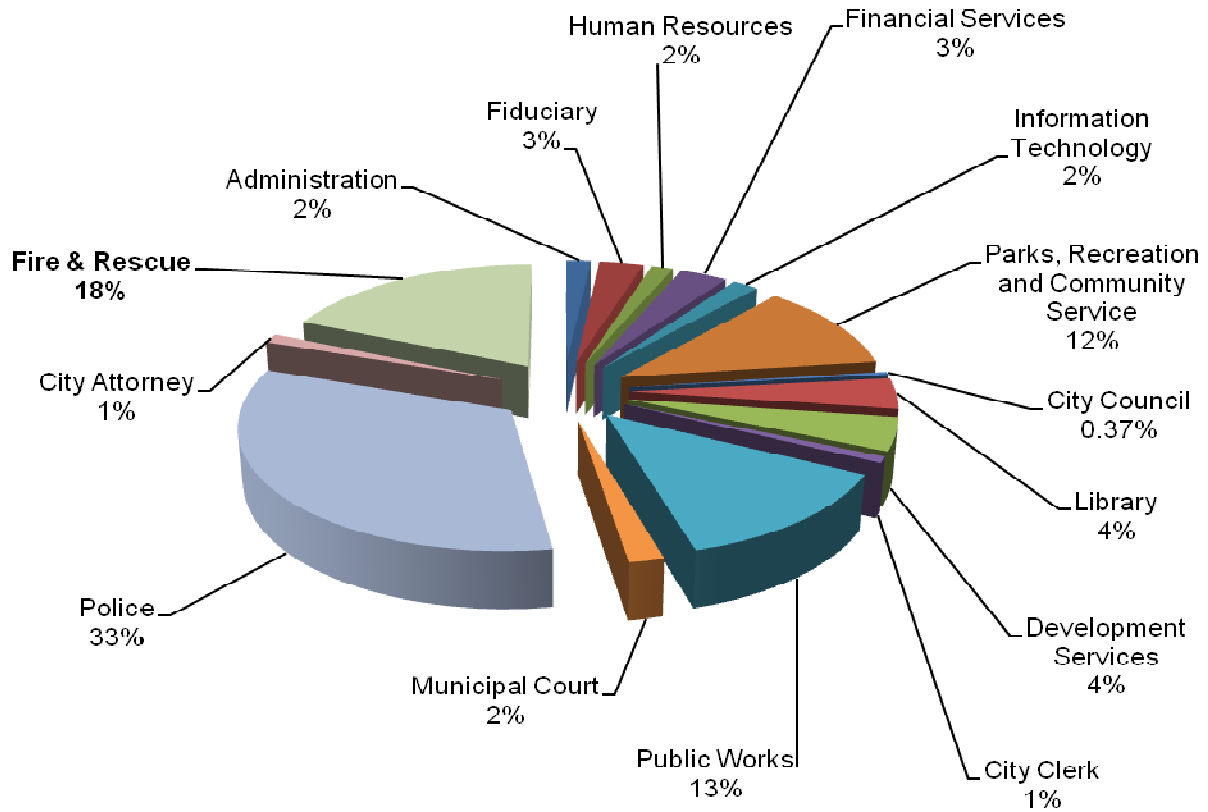
- To extinguish accidental or destructive fires and to prevent the occurrence and spread of such fires;
- To enforce all fire prevention regulations and all other ordinances and laws within the competence of the Department;
- To provide for emergency medical and rescue services;
- To review all building plans to ensure adherence to all fire prevention methods and procedures;
- To educate and train Department personnel to efficiently perform in their areas of responsibility and prepare them to function in the next highest position;
- To provide safety equipment for Department personnel that will assure adequate protection in all atmospheres and under all working conditions encountered.

The Department of Fire/Rescue also includes the Emergency Management Division which has as its mission to conduct planning, training, hazard identification, risk and vulnerability analyses, and resource identification for the City of Rio Rancho to further individual, business and community preparedness for all hazards thereby promoting a safe working environment and a sustainable community in pursuit of the mission of the City of Rio Rancho. The City's Office of Emergency Management is established by ordinance to carry out the responsibility of community preparedness under the State Civil Emergency Preparedness Act, State Emergency Management Act, and other acts embodied in the State statutes to ensure our community is prepared for any emergency or disaster. This critical office exists to mitigate the effects of potential hazards, prepare/plan for measures to be taken which will preserve life and minimize damage to property, respond during emergencies and provide necessary assistance, and ensure a rapid recovery from disasters by restoring the community to its pre-disaster condition.

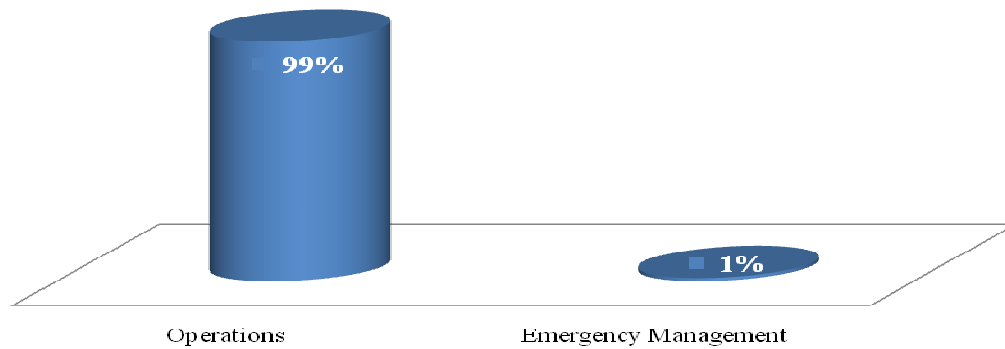
City of Rio Rancho Department Budget Structure



**GENERAL FUND
FISCAL YEAR 2012
Fire and Rescue
Total Budget \$9,376,633**



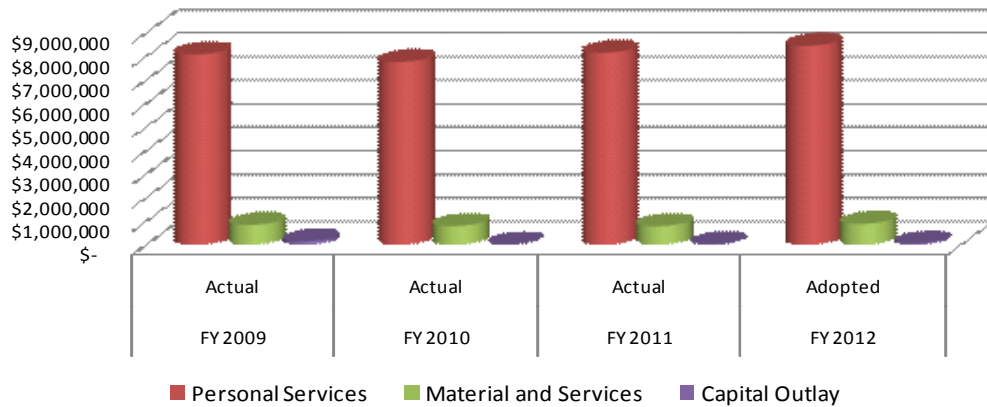
Percentage by Cost Center



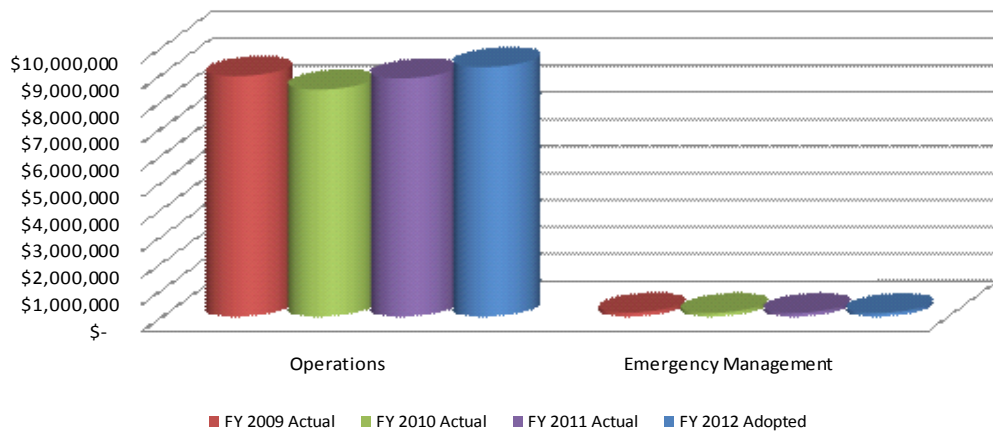
**FIRE/RESCUE
BUDGET SUMMARY
FISCAL YEAR 2011-2012**

<i>Object of Expenditures</i>	FY 2009 Actual	FY 2010 Actual	FY 2011 Actual	FY 2012 Adopted
General Fund				
Personal Services	\$ 8,076,004	\$ 7,763,354	\$ 8,149,051	\$ 8,445,545
Material and Services	839,819	786,038	786,876	884,088
Capital Outlay	139,118	-	26,000	47,000
Total	9,054,941	8,549,392	8,961,927	9,376,633
Expenditure by Cost Center				
Cost Center				
Operations	\$ 8,914,764	\$ 8,419,143	\$ 8,835,658	\$ 9,253,619
Emergency Management	140,177	130,249	126,269	123,014
Total	9,054,941	8,549,392	8,961,927	9,376,633

By type of Expenditures



Expenditures by Cost Center



FIRE / RESCUE					
OPERATIONAL PERFORMANCE INDICATORS					
Cost Center	2009	2010	2011		2012
	Actual	Actual	Target	Actual	Target
Operations					
Average response time to priority 1 fire calls	6.24 min	6.34 min	6.30 min	6.34 min	6.30 min
Total operating expenditures per population	103.55	101.95	101.84	101.95	100.36
Emergency Management					
Number of training courses per FTE	348	300	320	614	500

FY 10 completions impacted by NIMS training emphasis 2008-2009 and reduced City FTEs

FY 11 target increased due to additional NIMS training mandates for 2010-2012

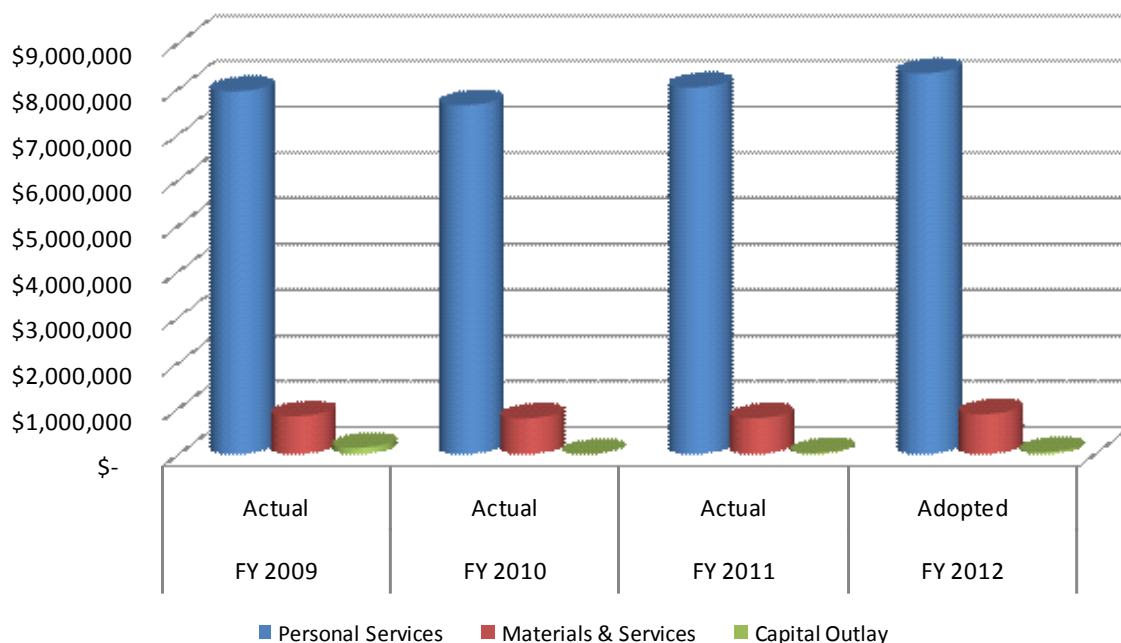
Fire / Rescue / Operations (6530)

Program Description:

The Department of Fire and Rescue provides fire suppression and emergency medical services to the citizens of the community. Fire prevention efforts are in accordance with regulations set forth in the adopted Fire Code and the Occupational Safety and Health Administration (OSHA).

FIRE / RESCUE DEPARTMENT Fire / EMS Operations Cost Center 101-6530 Expenditures					
	FY 2009 Actual	FY 2010 Actual	FY 2011 Actual	FY 2012 Adopted	% Change
Personal Services	\$ 7,942,713	\$ 7,637,018	\$ 8,024,568	\$ 8,332,240	4%
Materials & Services	832,933	782,125	785,090	874,379	11%
Capital Outlay	139,118	-	26,000	47,000	0%
Total	\$ 8,914,764	\$ 8,419,143	\$ 8,835,658	\$ 9,253,619	5%
Positions Approved*	99	100	99	100	1%

*Full Time Equivalence

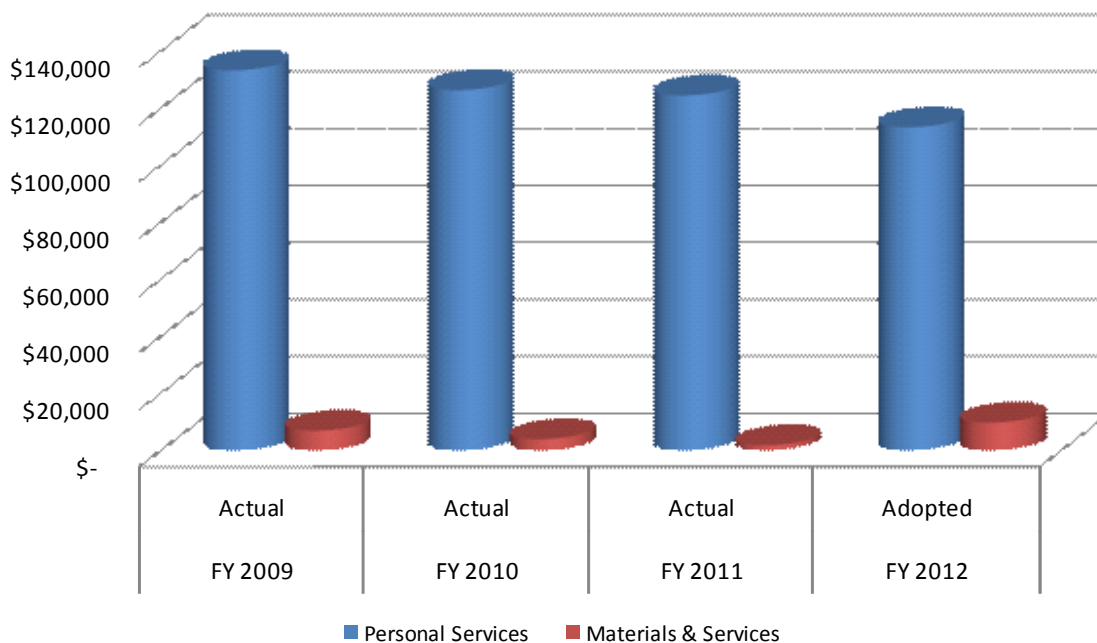


Fire / Rescue / Emergency Management (6545)

Program Description: Emergency Management for the City of Rio Rancho.

FIRE / RESCUE DEPARTMENT Emergency Management Cost Center 101-6545 Expenditures					
	FY 2009 Actual	FY 2010 Actual	FY 2011 Actual	FY 2012 Adopted	% Change
Personal Services	\$ 133,291	\$ 126,336	\$ 124,483	\$ 113,305	-9%
Materials & Services	6,886	3,913	1,786	9,709	444%
Total	\$ 140,177	\$ 130,249	\$ 126,269	\$ 123,014	-3%
Positions Approved*	2	2	2	2	0%

*Full Time Equivalence



THIS PAGE LEFT INTENTIONALLY BLANK

